

Pegasus Solar Quick Start Instructions

This guide provides the basic information needed to install the LightSpeed Mounting System. Wear proper OSHA approved safety equipment when working on a roof. Wear proper eye and fall protection. Use properly anchored fall protection equipment. **LightSpeed Mount products are not rated as fall protection equipment and should not be used as such.** To see a short installation video, scan the QR code.

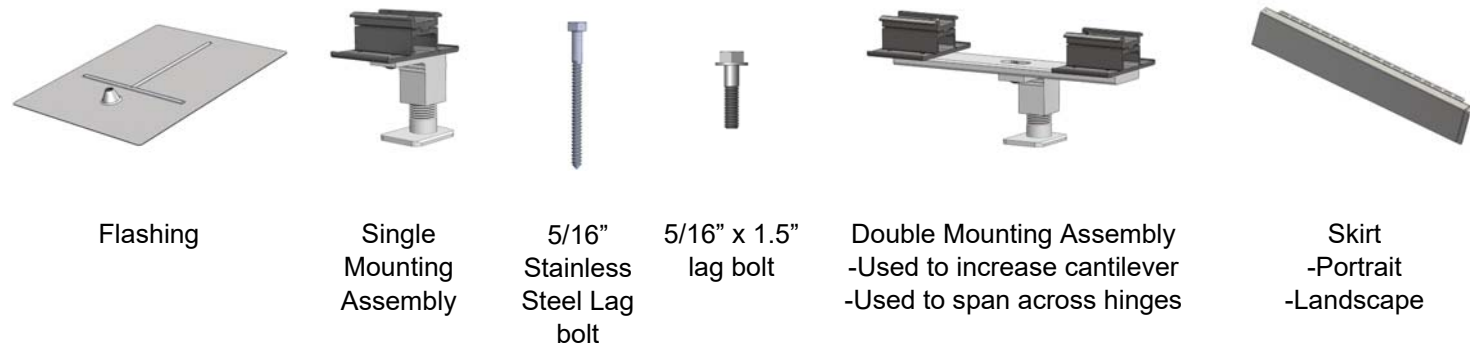


Tool List

Tape Measure	7/32" jobber bit
Roof Chalk/Crayons	Gloves
Knife	Roofer Bar
Chalk Line	1/2" deep socket with drill adapter
Drill	String line



Components



Flashing

Single Mounting Assembly

5/16" Stainless Steel Lag bolt

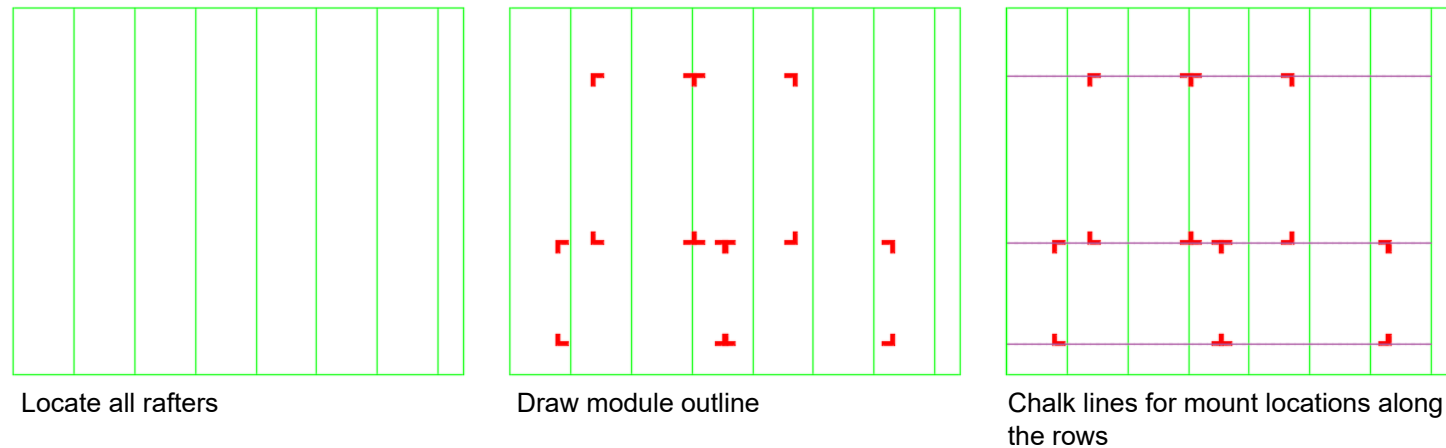
5/16" x 1.5" lag bolt

Double Mounting Assembly
-Used to increase cantilever
-Used to span across hinges

Skirt
-Portrait
-Landscape

Layout

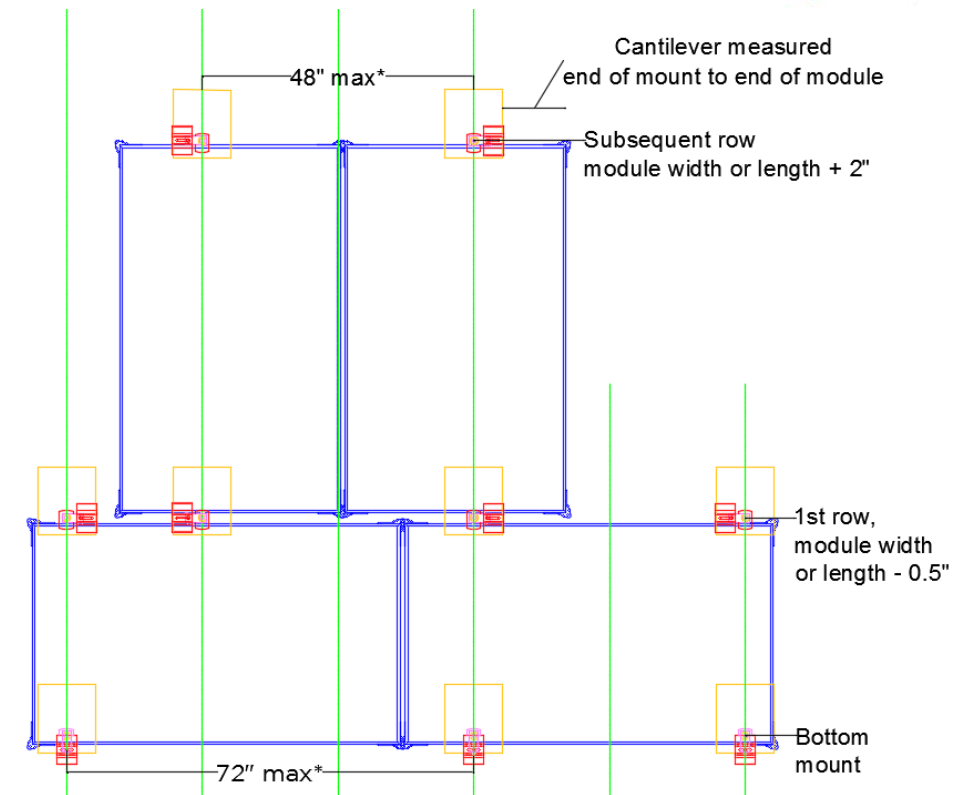
Note: First row mounting assemblies are set pointing down. Subsequent mounting assemblies are placed module width or length plus 2" (to account for clamp width). With this spacing, there is $\pm 2"$ Along a row, add 1" to module width or length.



Locate all rafters

Draw module outline

Chalk lines for mount locations along the rows



Double Mounting Assembly enables the mount to be up to 26" from the end of the module, while maintaining the 19" cantilever.

- * Check span tables for maximum span for the project wind and snow load requirements.
- * Maximum cantilever module edge to clamp edge: 19 inches.
- * Minimum distance from the eave: 6 inches

Example Mount Spacing for 39" x 64.5" module

Connection Point	Add	Row to Row Landscape	Cumulative Dimension	Row to Row Portrait	Cumulative Dimension
First Row	0.0"	0.0"	0.0" $\pm 2"$	0.0"	0.0" $\pm 2"$
Second Row	-0.5"	38.5"	38.5" $\pm 2"$	64.0"	64.0" $\pm 2"$
Third Row	2.0"	41.0"	79.5" $\pm 2"$	66.5"	130.5" $\pm 2"$
Fourth Row	2.0"	41.0"	120.5" $\pm 2"$	66.5"	197.0" $\pm 2"$
Fifth Row	1.5"	40.5"	161.0" $\pm 2"$	66.0"	263.0" $\pm 2"$
Sixth Row	2.0"	41.0"	202.0" $\pm 2"$	66.5"	329.5" $\pm 2"$
Seventh Row	2.0"	41.0"	243.0" $\pm 2"$	66.5"	396.0" $\pm 2"$

All dimensions in inches.

Pegasus Solar expressly reserves its common law copyright and other property rights in these plans. These plans shall not be reproduced, changed, or copied in any form or manor, nor shall they be assigned to a third party without first obtaining Pegasus Solar prior written permission and consent. In the event of a third party's unauthorized reuse of these plans, said their party shall hold Pegasus Solar harmless.

PEGASUS SOLAR PROVIDES THE INFORMATION IN THIS DOCUMENT ON AN AS IS INFORMATIONAL BASIS ONLY. PEGASUS SOLAR HAS NOT MADE ANY INDEPENDENT INSPECTION OF THE PROJECT SITE NOR THE SPECIFIC MATERIALS TO BE INCORPORATED WITH THE PEGASUS SOLAR LIGHTSPEED SYSTEM. PEGASUS SOLAR PROVIDES THIS DOCUMENT AS A GUIDELINE BASED UPON THE FULL INSTALLATION MANUAL. VISIT WWW.PEGASUSSOLAR.COM OR CALL 1-408-638-9655 FOR A COPY OF THE INSTALLATION MANUAL. THE PROFESSIONALS HIRED FOR INSTALLATION SERVICES SHALL BE RESPONSIBLE FOR THE SPECIFICATIONS IN THE INSTALLATION. PEGASUS SOLAR SHALL NOT BE RESPONSIBLE TO ANY THIRD PARTY FOR ANY THIRD PARTY'S RELIANCE UPTON THE INFORMATION IN THIS DOCUMENT. Quick Start Guide V1.4, June 2016

Flashing Installation and Leveling



Drill pilot hole with 7/32" drill bit

Fill hole with caulk. Caulk around the flashing.

Attach mounting base with foot facing down the roof using 5/16" lag screw.



Spin mounting assembly onto base.
8 – turns for single
12 – turns for double

CRITICAL STEP: Align mounts using a sting line. Spin mounts to adjust the mounting assembly. Each full rotation of the mounting assembly is 1/8" change in elevation.

Optional Skirt Installation

The optional skirt comes in landscape and portrait lengths. Remove the nut on the front clamps, insert the front skirt, then re-install the nut and tighten.



Clamp skirt to front clamp



Slide skirt together



Finished Front Skirt

Pro-Tip: Position bottom mounting assemblies facing down with clamps centered. Position all other clamps rotated upward.



Lay module into first clamp.

Tighten lower clamp by tightening the 5/16" bolt to a torque 135 in. lbs.

Spin upper clamp over module, do not tighten.

Pro-Tip: Install subsequent modules as close to hinge as possible. Prior to tightening module clamps, start and tighten the hinge bolts first (top hinge bolt, then bottom hinge bolt)



Install second module.

Slide modules together. Ensure threaded hole is on the bottom.

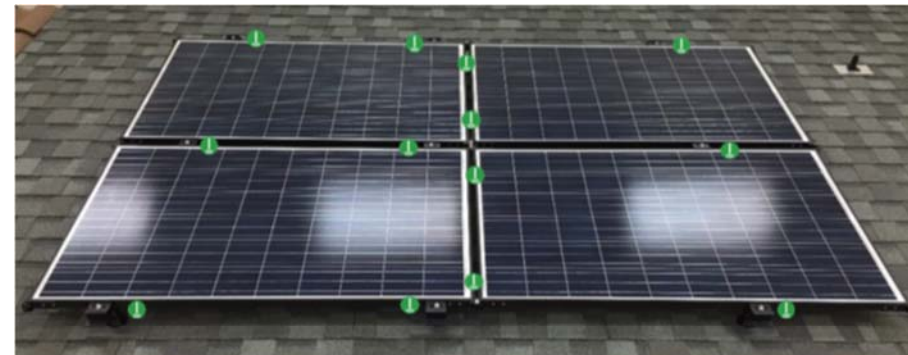
Secure with 5/16" lag bolt to the torque 170 in. lbs.

Wire Management

Use standard wire clips to secure wire to module frames. Modules can be prepped while off the roof, then final connections and home run wire management can be performed as the modules are installed.

System Bonding

Up to 100 contiguous modules can be connected together in one bonding matrix. Use WEEB-LUG-8.0, UL 67 and UL Sub 2703 Tested & Certified.



Maximum Contiguous Modules	100
Fuse Amp Rating	20 amps
Minimum Gauge Wire	10 awg
Wire Type	Bare Copper
Module Frame Thicknesses	32-40mm



Install lay in ground lug with 5/16" stainless steel lag bolt



Install lay in ground lug with 5/16" stainless steel lag bolt, nut washer.



Middle location– 5/16" stainless steel lag bolt and nut.

Certifications and Code Compliance

- UL Subject 2703, for Electrical Bonding and Grounding
- ASCE 7-05 Minimum Design Loads for Buildings and Other Structures
- ASCE 7-10 Minimum Design Loads for Buildings and Other Structures
- Fire Class A for steep-slope roof applications when using Type 1 and Type 2 listed PV modules (Skirt optional)
- Fire Class A for low-slope roof applications when using Type 1 and Type 2 listed PV modules when using skirt with 2 1/8" or less gap between roof and skirt.
- Flashing AC286 Tested with and without use of sealant

