



Installing Support Block on LightSpeed Flashing



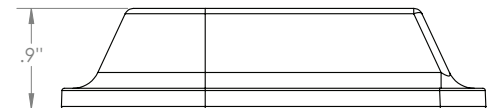
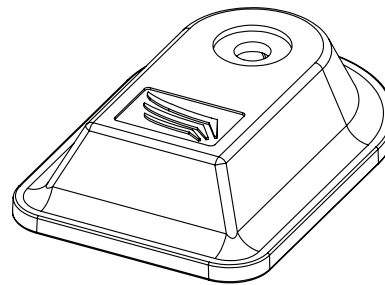
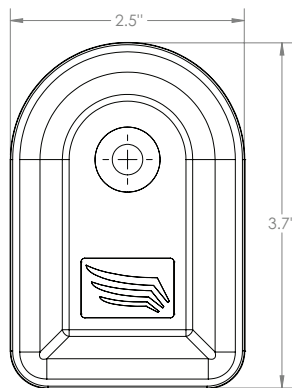
Support Block with L-foot

Pegasus Solar's LightSpeed Support Blocks make it simple to install L-feet for traditional railed systems. Compared to traditional flashings, Support Blocks provide superior waterproofing by elevating the water seal above the roof.

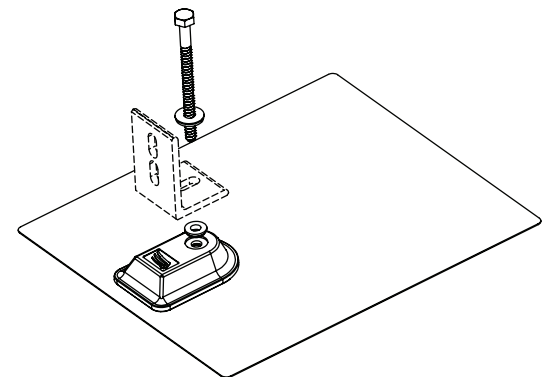
- One piece cast aluminum
- Elevated water seal provides superior waterproofing
- Compatible with all major rail manufacturers
- Universal support for L-feet, Conduit, and Junction Boxes

Use with LightSpeed Mount Composite Flashing to install rail system L-feet, conduit straps, and junction boxes.

Support Blocks are supplied in kits of 6 with flashings, all washers and lag screws required for installation.



Specifications	Support Block for L-Feet
Application	L-Feet, Conduit Straps, Junction Box Bracket
Rail Compatibility	Most Standard L-Feet
Elevated Water Seal	Yes
Seal Height	0.7"
Flashing	LightSpeed Comp Flashing
Sealing Washers	EPDM Washer
Installation Hardware	L-Feet 5/16"x4-1/2" SS Lag Screw and 5/16" EPDM Washer Conduit/JBox 1/4"x2" SS Lag Screw and 1/4" EPDM Washer
Material	Aluminum
Finish	Mill
Weight	0.22lbs/100gr



Patents Pending. All rights reserved.
© 2016 Pegasus Solar Inc.